

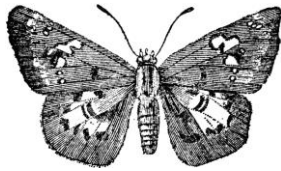
DATE: _____

TIME: _____ TO _____

OBSERVERS: _____

WEATHER: _____

Butterflies are insects in the Order Lepidoptera, which translates to scaled wings. They go through four life stages: egg, caterpillar, chrysalis and adult. About 160 butterfly species are found in Florida. Florida's state butterfly is the Zebra Heliconian, also called the Zebra Longwing.



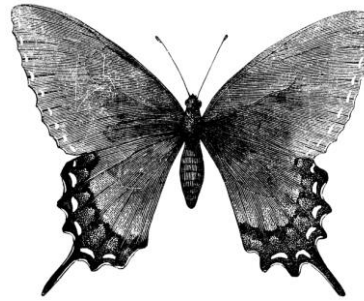
SKIPPERS (Family Hesperiiidae)

Spread-winged Skippers (Pyrginae)

-Silver-spotted Skipper (*Epargyreus clarus*)
-Long-tailed Skipper (*Urbanus proteus*)
-Dorantes Longtail (*Urbanus dorantes*)
-Northern Cloudywing (*Thorybes pylades*)
-Confused Cloudywing (*Thorybes confusifis*)
-Hayhurst's Scalopw. (*Staphylus hayhurstii*)
-Horace's Duskywing (*Erynnis horatius*)
-Zarucco Duskywing (*Erynnis zarucco*)
-White Checkered-Skipper (*Pyrgus albescens*)
-Tropical Checkered-Skipper (*Pyrgus oleus*)

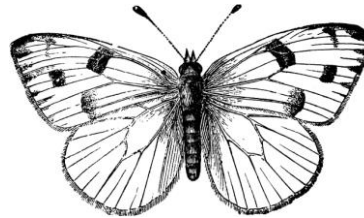
Grass-Skippers (Hesperinae)

-Clouded Skipper (*Lerema accius*)
-Southern Skipperling (*Copaeodes minima*)
-Fiery Skipper (*Hylephila phyleus*)
-Whirlabout (*Polites vibex*)
-Southern Broken-Dash (*Wallengrenia otho*)
-Northern Broken-Dash (*W. egeremet*)
-Sachem (*Atalopedes campestris*)
-Delaware Skipper (*Anatrytone logan*)
-Aaron's Skipper (*Poanes aaroni*)
-Dun Skipper (*Euphyes vestris*)
-Monk (*Asbolis capucinus*)
-Twin-spot Skipper (*Oligoria maculata*)
-Brazilian Skipper (*Calpodis ethlius*)
-Ocola Skipper (*Panoquina ocola*)



SWALLOWTAILS (Family Papilionidae)

-Pipevine Swallowtail (*Battus philenor*)
-Polydamas Swallowtail (*Battus polydamas*)
-Zebra Swallowtail (*Eurytides marcellus*)
-Black Swallowtail (*Papilio polyxenes*)
-Giant Swallowtail (*Papilio cresphontes*)
-Eastern Tiger Swallowtail (*Papilio glaucus*)
-Spicebush Swallowtail (*Papilio troilus*)
-Palamedes Swallowtail (*Papilio palamedes*)



WHITES AND SULPHURS (Family Pieridae)

Whites (Pierinae)

-Checkered White (*Pontia protodice*)
-Great Southern White (*Ascia monuste*)

Sulphurs (Coliadinae)

-Orange Sulphur (*Colias eurytheme*)
-Southern Dogface (*Zerene cesonia*)
-Cloudless Sulphur (*Phoebis sennae*)
-Barred Yellow (*Eurema daira*)
-Little Yellow (*Pyristia lisa*)
-Sleepy Orange (*Abaeis nicippe*)
-Dainty Sulphur (*Nathalis iole*)



GOSSAMER-WING BUTTERFLIES

(Family Lycaenidae)

Hairstreaks (Theclinae)

-Great Purple Hairstreak (*Atides halesus*)
-Red-banded Hairstreak (*Calycopis cecrops*)
-Gray Hairstreak (*Strymon melinus*)
-White-M Hairstreak (*Parrhasius m-album*)

Blues (Polyommattinae)

-Cassius Blue (*Leptotes cassius*)
-Ceraunus Blue (*Hemiargus ceraunus*)



BRUSHFOOTED BUTTERFLIES

(Family Nymphalidae)

Snouts (Libytheinae)

-American Snout (*Libytheana carinenta*)

Heliconians (Heliconiinae)

-Gulf Fritillary (*Agraulis vanillae*)
-Zebra Heliconian (*Heliconius charithonia*)
-Variegated Fritillary (*Euptoieta claudia*)

Brushfoots (Nymphalinae)

-Phaon Crescent (*Phyciodes phaon*)
-Pearl Crescent (*Phyciodes tharos*)
-American Lady (*Vanessa virginiensis*)
-Red Admiral (*Vanessa atalanta*)
-Common Buckeye (*Junonia coenia*)
-White Peacock (*Anartia jatrophae*)

Admirals (Limenitidinae)

-Red-spotted Purple (*Limenitis arthemis*)
-Viceroy (*Limenitis archippus*)

Hackberry Butterflies (Apaturinae)

-Hackberry Emperor (*Asterocampa celtis*)
-Tawny Emperor (*Asterocampa clyton*)

Satyr and Wood-Nymphs (Satyrinae)

-Carolina Satyr (*Hermeuptychia sosybius*)

Milkweed Butterflies (Danainae)

-Monarch (*Danaus plexippus*)
-Queen (*Danaus gilippus*)
-Soldier (*Danaus eresimus*)

IMMATURE BUTTERFLIES

Species: _____

____ Eggs ____ Caterpillars ____ Pupae

on (plant/surface) _____

Species: _____

____ Eggs ____ Caterpillars ____ Pupae

on (plant/surface) _____

Species: _____

____ Eggs ____ Caterpillars ____ Pupae

on (plant/surface) _____

FIELD NOTES

List of butterfly species observed on Lake Apopka North Shore restoration area during monthly surveys conducted by Orange Audubon Society's (www.orangeaudubonfl.org) Wildlife Survey Committee during 2015 and 2016.

BUTTERFLY INFORMATION SOURCES

Florida Center for Instructional Technology. 2004-2016. *ClipArt ETC*. Educational Technology Clearinghouse, College of Education, University of South Florida. Accessed May 29, 2016. Used as source for the butterfly clip art for this checklist.

Glassberg, J., M.C. Minno and J.V. Calhoun. 2000. *Butterflies Through Binoculars: Florida*. Oxford University Press, New York.

Lotts, K. and T. Naberhaus, coordinators. *Butterflies and Moths of North America: Collecting and sharing data about Lepidoptera* (www.butterfliesandmoths.org). Accessed May 29, 2016. Used as source for family, common and scientific names.

Minno, M.C., J.F. Butler and D.W. Hall. 2005. *Florida Butterfly Caterpillars*. University Press of Florida, Gainesville, Florida. Used as source for subfamily names (separated by dotted lines).

Minno, M.C. and M.F. 2010. *Butterflies of Central Florida: A Guide to Common and Notable Species*. Quick Reference Publishing, Austin, Texas.



ST. JOHNS RIVER

WATER MANAGEMENT DISTRICT

P.O. Box 1429 Palatka, FL 32178-1429

Palatka: 386-329-4404

www.sjrwmd.com

© 2016 St. Johns River Water Management District

Lake Apopka

North Shore

BUTTERFLY

CHECKLIST

